

TAYLOR®

ThermoCheck®

User Manual



Taylor® ThermoCheck® 9828

Thank you for purchasing a Taylor® dls product.
Please read this user manual before using this unit.

www.taylorusa.com

Contents

Introduction	1	
Getting Started	3	
ThermoCheck® Keypad Overview		3
What You Will Need, to Use the Software		5
Installing the Software		5
Navigating the Software		6
Configuration Options		7
Connection		8
Battery Replacement		9
Battery Indicator		9
Setting up a Database	11	
Products		12
Processes or Locations		13
Database Orientation		16
Database Item Order		17
Product Specifications, Alarms and Delays		19
Templates		20
Uploading a Database		20
Command Summary		21
Setting Up Corrective Actions	23	
Introduction		23
Creating Corrective Actions		23
Assigning Corrective Actions		24
Command Summary		25
Setting Up a User List	26	
Adding and Removing Users		27
User Options		28
Command Summary		29
Customizing the ThermoCheck®	30	
Customizing With the Software		30
Customizing Without Using the Software		33
Using the ThermoCheck®	34	
Using the ThermoCheck® for the First Time		34
Selecting a Product and Process/Location		34
Taking and Storing a Temperature Reading		36
Logging On and Logging Off		37
Accessing Data Stored in the ThermoCheck®	38	
Downloading Readings		38
Viewing Listed Readings		38
Graphing Readings		39
Viewing a Graph		39
Printing Readings		40
Saving Readings to a File		41
Quality Certificate	382	
Recycling of Electronic Devices	383	

1

Introduction

The ThermoCheck® is a portable, handheld temperature meter and temperature measurement storage device that facilitates the validation of quality control specifications for temperatures of products at various stages of production and storage.

Product descriptions and process/location descriptions can be stored in a database within the unit. Maximum and minimum temperature specifications for each process/location of products are stored in the database. Such databases must be created and uploaded to the unit with the ThermoCheck® *for Windows* software.

Stored temperature readings include the temperature measured, the product name, the process/location name and the date and time information for each temperature reading recorded.

Optional user identification (by unique PIN codes) is supported as a standard feature of the ThermoCheck®. The information that allows the identity of each user to be unique is controlled through the ThermoCheck® user software. If the tracking of unique user identification has been enabled and the relevant information has been uploaded and stored in the ThermoCheck® unit, then each stored reading will also identify the name of the user that took the reading.

The user software provides the facility for the download (retrieval) and viewing of stored readings. Readings are classified based on the product specifications for each process/location as stored in the database. Downloaded data reading(s) can also be saved to disk files and/or printed to hard copy through the user software.

Additionally, the software provides the facility to save database configurations to 'template' files on disk. These files can be edited or uploaded to one or more units at a later date.

To use the ThermoCheck® you will need to install the ThermoCheck® software (please refer to Chapter 2, Installing the Software for more information about installing the software) onto a computer so that a ThermoCheck® can be configured.

To configure a ThermoCheck® so that it will be able to take readings a Database will need to be uploaded in to the ThermoCheck® (please refer to Chapter 3, Setting up a Database for further information about creating and uploading a Database to a ThermoCheck®). To configure a ThermoCheck® so that it records the user (or operator) that recorded the reading along with the reading, a User List will need to be created and uploaded into the ThermoCheck®. A User List can be uploaded to a ThermoCheck® before, after or at the same time as the Database is uploaded to the ThermoCheck® (please refer to Chapter 4, Setting Up a User List, for further information about creating and uploading a user list to a ThermoCheck®).

Once a Database and the optional user list have been uploaded to a ThermoCheck®, the ThermoCheck® is ready to record readings (please refer to Chapter 6, Using the , for further information about recording readings with a ThermoCheck®).

After one or more users have recorded readings, the readings can be downloaded to the computer with the ThermoCheck® software so that the readings can be viewed and analysed (please refer to Chapter 7, Accessing Data Stored in the , for further information about recording readings with a ThermoCheck®).

2

Getting Started

To use the ThermoCheck® to record temperature readings, the unit will need a database configured, linking products, process/location and product specifications. You can configure a database in the unit with the user software.

To turn on the ThermoCheck® press any key on the keypad. Additionally, the connection of external power, and connection to a computer's serial port will turn the ThermoCheck® on.

ThermoCheck® Keypad Overview



ThermoCheck® Keypad



Turns the ThermoCheck® on and off (pressing any button will turn the ThermoCheck® on).



Instructs the ThermoCheck® to record a reading for the currently selected product at the currently selected process/location



“ENTER” Selects the current item (product, process / location or setup option) on the display.



Deselects the last item selected (from pressing ENTER). Also used for deleting the last data entry key pressed when providing data entry to the ThermoCheck®.



“USER” Used for Logging a user on to (or off) a ThermoCheck®, when the ThermoCheck® has been configured to support users.



“LIST” Used for selecting a product and process/location, so that a reading can be stored. (See *Selecting a Product and Process/Location* in Chapter 6, *Using the ThermoCheck®*, for further information.)



Used for scrolling down through a list of products or a list of processes/locations for selection.



Used for scrolling up through a list of products or a list of processes/locations for selection.



Used for scrolling left through a list of products, a of list processes/locations for selection. In the Setup options this is used for adjusting the values of the settings.



Used for scrolling right through a list of products, a list of processes/locations for selection. In the Setup options this is used for adjusting the values of the settings.



“SETUP” Displays the options of the ThermoCheck® for viewing and/or modification. (See *Customizing Your ThermoCheck® without the Software* in Chapter 5, *Customizing the ThermoCheck®*, for further information.)

What You Will Need, to Use the Software

Installation of the software requires 9.4 megabytes of free disk space, plus an additional 5.8 megabytes of free hard disk space during the installation process.

In order to use the ThermoCheck® for Windows software, you will need an IBM-compatible PC with at least one free serial communications (COM) port, a 386, or better, processor and at least 8 megabytes of memory, running the Windows® 9x, NT, 2000 (or later) operating system.

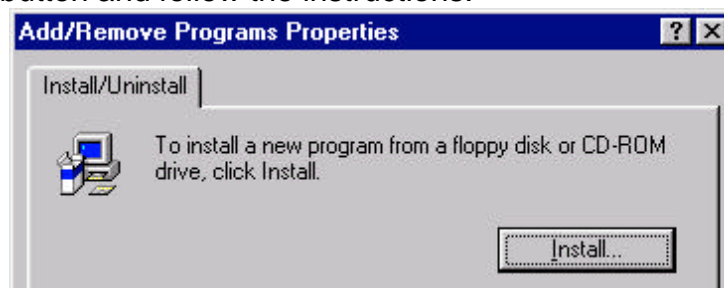
Installing the Software



1. Ensure that Microsoft Windows is started.
2. Insert the ThermoCheck® for Windows installation CD-ROM into your CD-ROM drive or the installation floppy disk into a disk drive.

For users using Microsoft Windows 95, NT 4.0, or later if the installation program does not automatically start:

- a. Start the Control Panel and choose the “Add/Remove Programs” icon.
- b. Select the Install button and follow the instructions.



3. Once the ThermoCheck® installation program has started, follow the instructions on the screen. During the installation process you may change the directory you want the software to install to if you want the software installed to a location different to the default. The installation program will also create a ThermoCheck® program group, which will also contain a *ThermoCheck® for Windows* icon so that the software can be started.
4. To run ThermoCheck® for Windows, select the *ThermoCheck® for Windows* icon from the ThermoCheck® program group on the Start menu. Alternatively, if you enabled the “Add a shortcut to the desktop” option, you can start the software by opening the *ThermoCheck® for Windows* icon on your desktop.
5. The first time you run ThermoCheck® for Windows, you may need to adjust the default configuration. In particular, you may need to redefine the serial port the interface is plugged into. See *Configuration Options*, later in this chapter, for further instructions.

After installing the software, we recommend you store the floppy disks or CDROM in a safe place.

WARNING: Keep magnets away from floppy disks as strong magnetic fields can damage data held on such media.

Navigating the Software

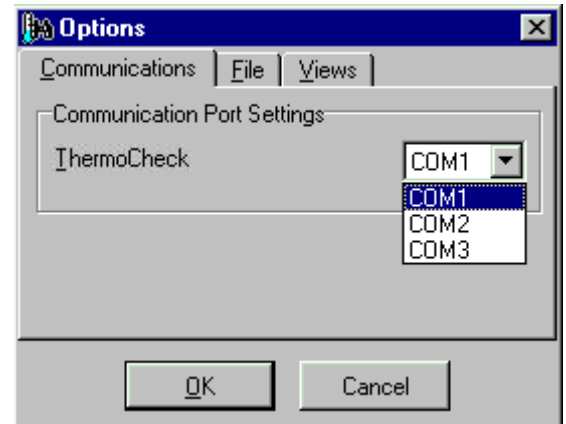
When the software starts, there are five items on the menu bar. These five menus will give you access to the various functions of the software:

File	Allows opening, saving, closing and printing of ThermoCheck® data reading files and opening and saving of database configuration files.
Edit	Provides commands for editing database information, such as product and process/location details, and some selection commands for readings information. Also provides access to software configuration options (see Configuration Options, later in this chapter).
ThermoCheck®	Allows access to the configuration (refer to Chapters 3, 4 and 5) or the stored readings (refer to Chapter 7, Accessing Data Stored in the) in a ThermoCheck® connected to the PC.
Window	Provides common commands for manipulating the position and size of windows. Also provides a way to switch between currently open windows.
Help	Provides access to distributor contact details, and an exact definition of the software version.

Configuration Options

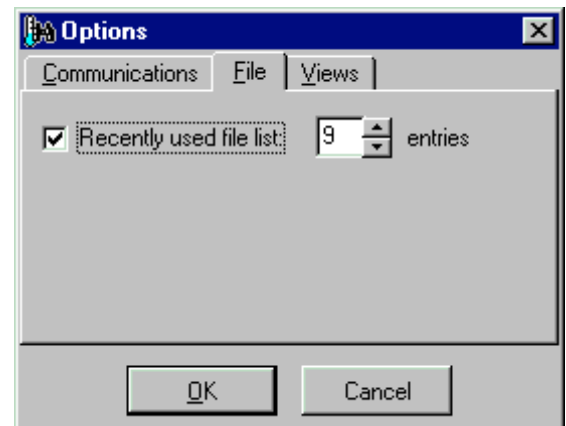
It is recommended that you first configure the software to ensure that the communications port that the ThermoCheck® is connected to matches the communications port that the software communicates with. The default is the first serial communications port, COM1.

You can change the communications port setting by selecting **Options** from the **Edit** menu. This will launch the **Options** dialog box. You can now select the appropriate port from the drop-down list ThermoCheck®, in the **Communications** tab. If you do not know which communications port to use, contact your network administrator or computer vendor.



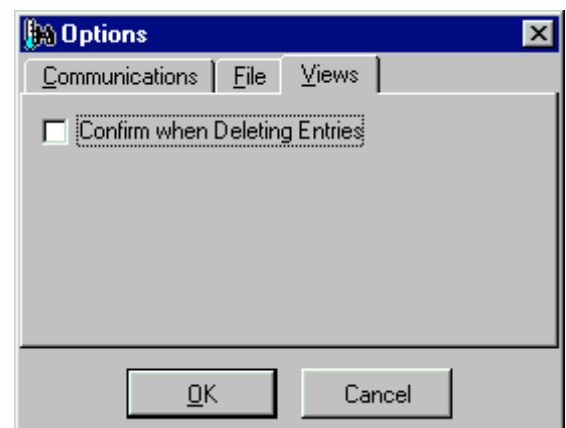
There are other options available in this dialog box:
On the **File** tab:

- **Recently used file list.** If this option is enabled, a list of the most recently used files will be included in the file menu, allowing you to quickly load recently used files. You can specify how many files to display in the list by changing the value in the box labelled **entries**.



On the **Views** tab:

- **Confirm when Deleting Entries.** If this option is enabled, you will be asked to confirm the deletion of entries in a database window, for example products or users. If not enabled, items will be deleted immediately, without confirmation. For more information about database windows and entries, see Chapter 3, Setting up a Database.



Connection

To get the ThermoCheck® to successfully communicate with the software, you will need to connect the interface cable to a serial communications port on your PC. If you select **Get Database** from the ThermoCheck® menu, you will see a progress bar at the bottom of the program window, indicating how far through the process the software is. When the process is complete, a database window will appear on the screen. This window allows you to:

- Create and upload a database in the unit (**Products** and **Processes/Locations**). Please refer to Chapter 3, Setting up a Database, for further information.
- Create and upload a user list (**Users**). Please refer to Chapter 4, Setting Up a User List, for further information.
- View and modify configuration settings of the ThermoCheck® (**Settings**). Please refer to Chapter 5, Customizing the , for further information.

Battery Replacement

Your ThermoCheck® requires two AA batteries to operate. You can use either alkaline or rechargeable (for example, NiCd or NiMH) batteries, however please remember that you must **never attempt to charge alkaline batteries**.

The two AA batteries delivered with your ThermoCheck® are rechargeable. They have been installed for your convenience.

To install new batteries first remove the battery panel located at the top of back of your ThermoCheck® device (see figure 2.0). The ThermoCheck® battery panel is fastened with three small Philips head screws and you will require a Philips screwdriver to remove these.

Insert the two batteries with the correct polarity (as marked inside the compartment).

Before replacing the lid, ensure that the batteries are fully inserted. If the batteries are not inserted correctly, the lid will not fit properly, and could consequently damage the seal or the batteries.

Carefully place the cover of the battery compartment back on, and gently tighten the three screws.

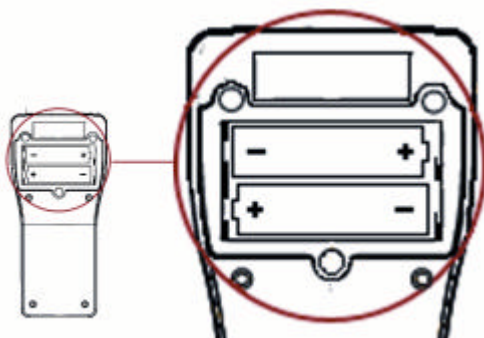
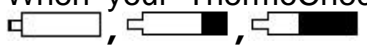


Figure 2.0 (ThermoCheck® battery compartment)

Important – To ensure that the ThermoCheck® device functions to an optimum level for the duration required, it is vital that the ThermoCheck® device is recharged regularly, preferably at the end of each assignment.

If you take less than two minutes for this procedure, the internal time clock will keep running. Otherwise it may revert to midnight on 1 Jan 2000, and will need to be set next time a database is sent to the unit. In the Settings panel (see Chapter 5), ensure the radio button labelled “**Match computer date and time**” is selected.

Battery Indicator

When your ThermoCheck® batteries are getting low, an empty battery symbol will be displayed. When your ThermoCheck® batteries are charging, an animation of changing battery is shown. . This is simply an animation and does not reflect your current battery capacity. At the completion of the charge cycle the charger switches to trickle charge. In this state the battery symbol will flash once every 20 seconds.

Under normal operation conditions, with a fresh battery, no symbol is shown.

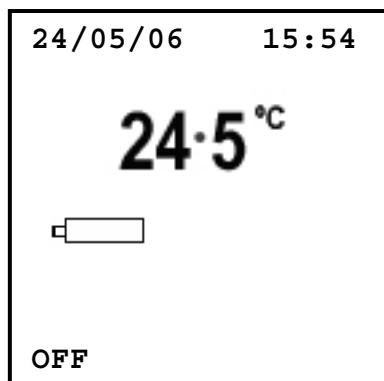


Figure 2.1 (Low battery)

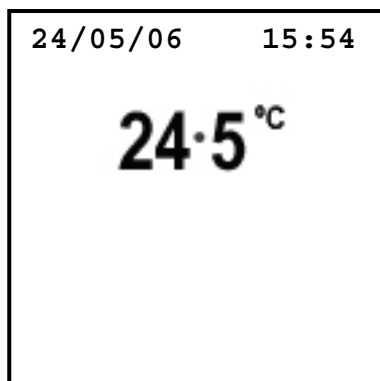


Figure 2.2 (High battery)

Attempting to charge faulty or non-rechargeable batteries

As mentioned above, it is important not to attempt to charge non-rechargeable batteries using the ThermoCheck device. If an attempt is made to recharge non-rechargeable batteries, the ThermoCheck will display the following image in the top right of its LCD display (see image 2.3 below). This image is also displayed if there are no batteries in the unit or the batteries within the unit are faulty.

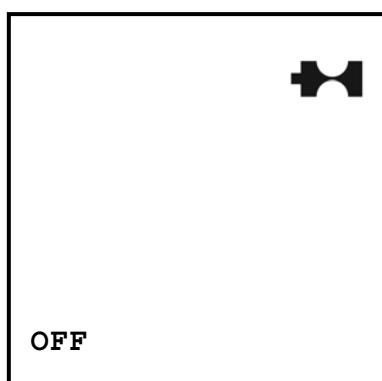


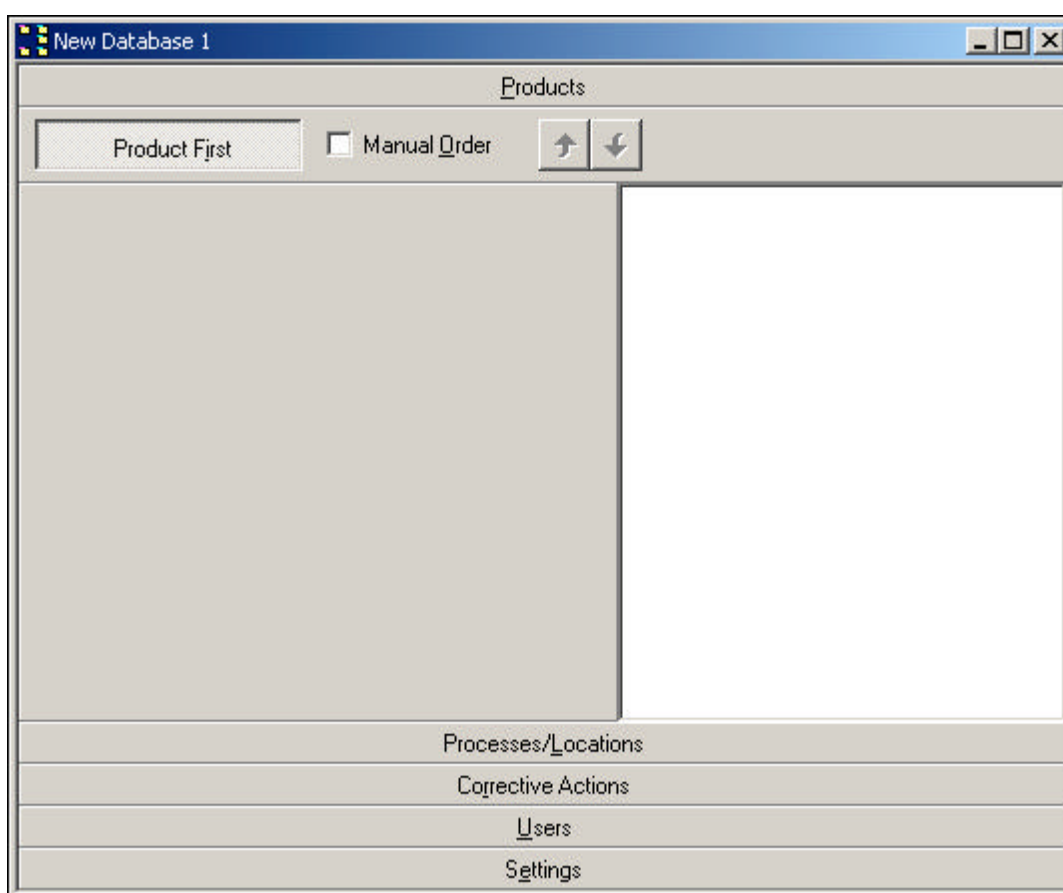
Figure 2.3 (Incorrect, faulty or absent battery symbol)

3

Setting up a Database

In order to use the ThermoCheck®, you need to create a product database. Databases link individual products with the processes/locations of their production at which you may want to monitor temperature. In addition, you can define upper and lower specification limits and alarm conditions, at each of the processes/locations involved in a product's production, to match quality control specifications. Databases can only be created and modified by using the ThermoCheck® software.

You can define an empty database by selecting **New** from the **File** menu, or download the settings from the unit to start from by selecting **Get Database** from the ThermoCheck® menu. Alternatively, you can work from a pre-defined template by selecting **Open** from the **File** menu, to open a template file (see *Templates*, later in this chapter). Either method will display a database window in the main application window.



An empty Database Window

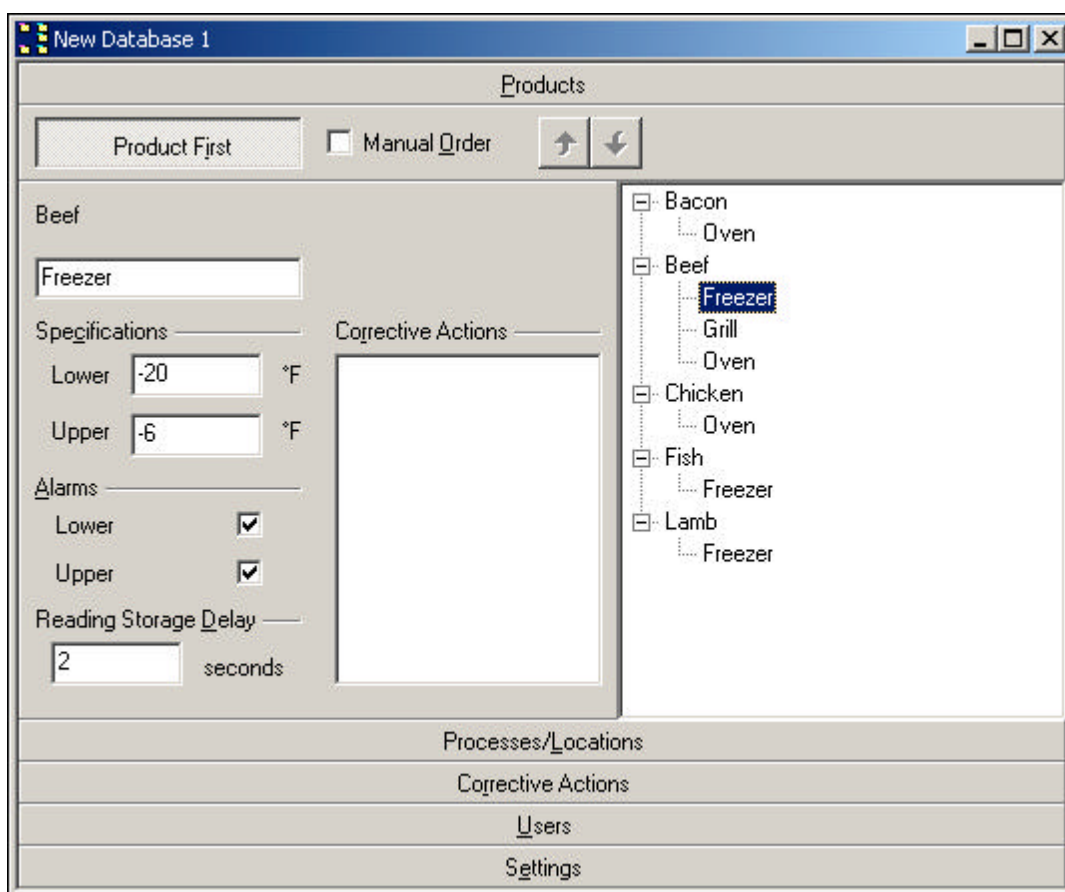
The database window has panel buttons for products, processes/locations, users, and the settings. When you click on each one of these panel buttons, you will be able to change the settings for that category in the panel that is revealed. Note that you can select a product, process/location, or user in the **Products**, **Processes/Locations** or **Users** panels by either:

- left-clicking once on the product, process/location, or user's name,
- or using the arrow keys to move the current selection up and down the list displayed in the current panel.

Products

Products represent the physical items or objects whose temperature needs monitoring. If you click on the **Products** button in a new database window, or a database window downloaded from a ThermoCheck® without a database already in it, you will see a blank panel. You can add new products, and add new processes/locations to a product, as follows:

- Select **New**, or **New Product**, from the **Edit** menu to add a new product.
- Select **New Process/Location** from the **Edit** menu to add a new process/location to the current product. Note that you cannot add a process/location in the product view if there are no products.
- If there is no current selection, no products are currently defined or a product is currently selected, press [Insert] to add a new product. You can then type the product's name.
- If a process/location is selected, press [Insert] to add another process/location. You can then type the process/location name.



Products Panel in the Database Window

All product names must start with a capital letter and the software will ensure that each product does start with a capital letter. Product names can not be blank (empty) and therefore the software will ensure that no products are created without a valid name.

The Products panel lists products, displaying each product's available processes/locations in a list under the product name. You can display a product's process/location list:

- by pressing [+] when the product is selected,
- or by left clicking with the mouse on the plus symbol beside the product's name.

You can hide the list, if it is visible, by clicking on the minus symbol beside the product's name. If a product is currently selected, you can hide the list of processes/locations under it by pressing the [-] key.

You can change a product or process/location name by:

- typing the new name directly into the appropriate field on the left,
- selecting the current name, clicking on it with the mouse, and typing the new name,
- or pressing [F2] when a product or process/location is selected, and typing the new name.

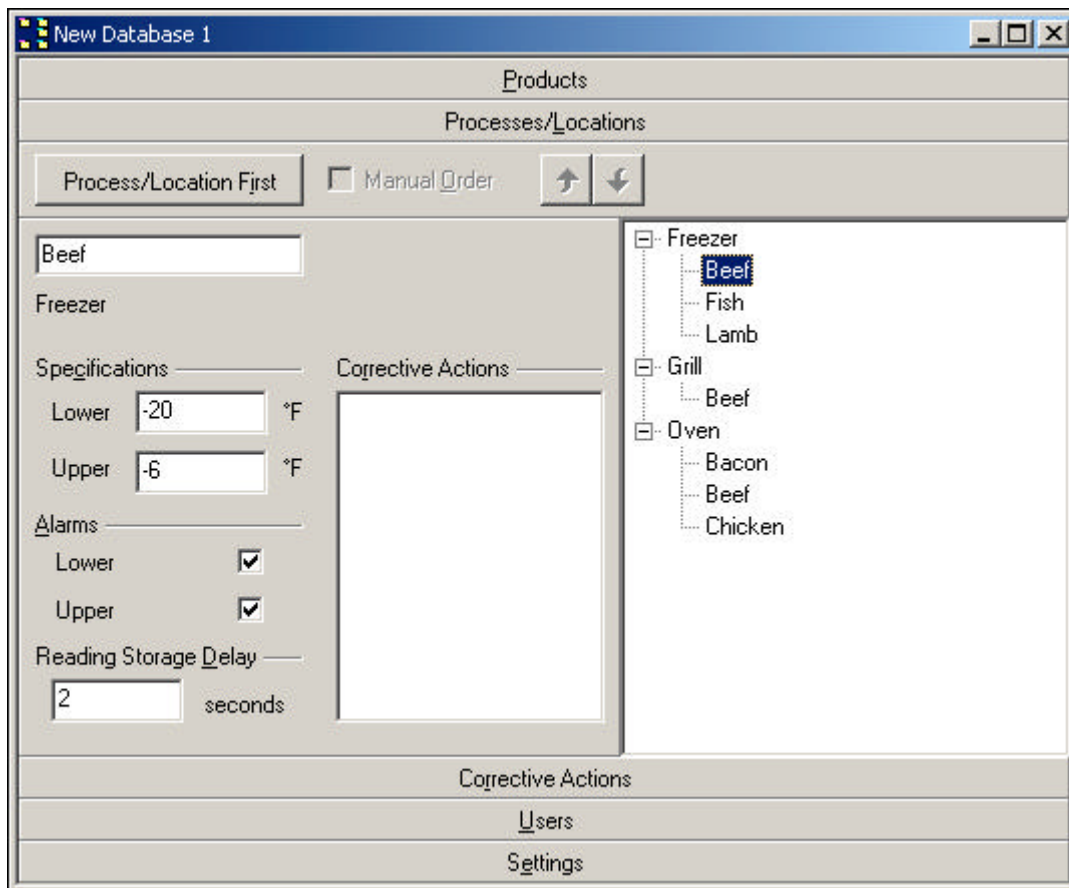
When you are editing a product or process/location name, and you wish to revert back to the original name, you can press [Esc], and the original name will be restored. If the product or process/location has just been created, and you are naming it for the first time, pressing [Esc] will delete the new product or process/location.

You can delete an existing product by selecting it and pressing the [Delete] key, or selecting **Delete** from the **Edit** menu. If the **Confirm when Deleting Entries** option is enabled in the **Configuration Options** (see Chapter 2, Configuration Options, for further information) then you will need to confirm the deletion operation before the product is deleted.

Processes or Locations

Processes or locations represent the stages in the production of a product at which the temperature needs monitoring. A process/location can apply to more than one product; for example, a "cooking" process could apply to both mince pies and sausage rolls. Such a process/location (that applies to multiple products) does not have to represent the same physical process/location. For example, the cooking of sausage rolls and mince pies may occur in different ovens, in different parts of the factory; but the conceptual process of cooking can be used to represent both cooking processes in the database if you so wish.

If you click on the **Processes/Locations** button in a new database window, or a database window downloaded from a ThermoCheck® without a preloaded database, you will see a blank panel. By default, the **Processes/Locations** panel lists processes/locations in alphabetical order, and displays under each process/location a list of products. For example, if you have added products and processes/locations with the Products panel, as above, you will see a list of the processes/locations you previously entered in the Processes/Locations panel.



Process/Locations Panel in the Database Window

You can expand the list of processes/locations to show the different products under each process/location:

- by pressing [+] when the process/location you want to expand is selected,
- or by left clicking with the mouse on the plus symbol beside the process/location name.

As with the products panel, you can hide a list of products under a process/location, if it is visible, by clicking on the minus symbol beside the process/location name. If a process/location is currently selected, you can hide its list of products by pressing the [-] key.

You can delete a process/location by selecting it and pressing the [Delete] key, or selecting Delete from the Edit menu. If the **Confirm when Deleting Entries** option is enabled in the **Configuration Options** (see Chapter 2, Configuration Options, for further information) then you will need to confirm the deletion operation before the process/location is deleted.

You can change a product or process/location name by:

- typing the new name directly into the appropriate field on the left,
- selecting the current name, clicking on it with the mouse, and typing the new name,
- or pressing [F2] when a product or process/location is selected, and typing the new name.

When you are editing a product or process/location name, and you wish to revert back to the original name, you can press [Esc], and the original name will be restored. If the product or process/location has just been created, and you are naming it for the first time, pressing [Esc] will delete the new product or process/location.

The Products panel and the Processes/Locations panel both display the same information of the products and processes/locations for the current database. However, they organise the information differently: the products panel lists products, with available processes/locations listed under each product, whereas the processes/locations panel lists processes/locations, with the applicable products for each process/location listed under each process/location. You do not need to update each panel manually when you alter the information in one. Any product or process/location added, modified or deleted in one panel will be automatically updated in the other panel.

As with the products panel, you can add new processes/locations and products in the **Processes/Locations** panel:

- Select **New**, or **New Process/Location**, from the **Edit** menu to add a new process/location.
- Select **New Product** from the **Edit** menu to add a new product to the current process/location. Note that you cannot add a product in the **Processes/Locations** panel if there are no processes/locations.
- If there is no current selection, press [Insert] to add a new process/location. Type the process/location name, and press the [Enter] key.
- If a process/location is selected, press [Insert] to add a new process/location. Type the process/location name, and press the [Enter] key.
- If a product is selected, press [Insert] to add a new product to the process/location. Type the product's name, and press the [Enter] key.

All process/location names must start with a capital letter and the software will ensure that each process/location does start with a capital letter. Process/location names can not be blank (empty) and therefore the software will ensure that no process/location is created without a valid name.

Database Orientation

In addition to entering product and process/location details, the software allows you to specify whether the database is to be primarily oriented around products, or processes/locations. This setting determines whether the operator of the ThermoCheck® chooses the product first, and then the process/location, or alternatively, the process/location and then the product. Note that some versions of the ThermoCheck® do not support modification of the database orientation. If your ThermoCheck® does not support this feature, or you are unsure if this feature is supported by your ThermoCheck®, please contact your local distributor for information on upgrading your ThermoCheck®.

For example, if the operator of the ThermoCheck® is to take readings by visiting each process/location in turn, taking readings for each of the products at the process/location, before moving on to the next process/location, Process/Location first orientation would suit best. You can choose this orientation by clicking the Process/Location first button at the top of the Processes/Locations panel. This will set processes/locations as the *primary key* into the database, and Processes/Locations can be referred to as the *primary* items. When operating the ThermoCheck®, this means that process/location items will be selected by the user first, and then products. Products, in this case, can be referred to as *secondary* items. For information on how database orientation affects the use of the ThermoCheck® unit, see Chapter 6, *Using the ThermoCheck®*.

However, if the operator of the ThermoCheck® were to collect readings for each product, at various processes/locations, before moving on to the next product, then Product first orientation would be an appropriate choice. You can choose this orientation by clicking the Product first button at the top of the Products panel. This orientation sets product items to be the *primary* items, and consequently the processes/locations will be the *secondary* items.

When uploading a database to the ThermoCheck®, or saving a database to a template file, any secondary items that are not associated with a primary item will be lost. For example, when Product first is selected, any processes/locations in the Processes/Locations panel that do not have any associated products will be lost when the database is uploaded or saved. In the opposite case, when Process/Location first is selected, any products that are not associated with a process/location will be lost when the database is saved or uploaded. In general, any secondary items must be included (by association with a primary item) in the primary panel in order to be preserved after the database is saved or uploaded.

Database Item Order

The software allows you to:

- manually define the order of each of the items in the database, or
- have the database items automatically sorted in alphabetical order.

These options are controlled via the **Manual Order** checkbox in the **Products** and **Processes/Locations** panels.

Please note that not all versions of ThermoCheck® support these options. If your ThermoCheck® does not support these options, or you are unsure if your ThermoCheck® supports these options, then please contact your local distributor for information on upgrading your ThermoCheck®.

To enable manual ordering:

If a database has **Process/Location first** enabled, check the **Manual Order** checkbox in the Processes/Locations panel, or

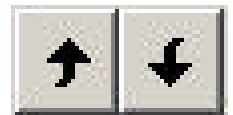
If a database has **Product first** enabled, check the **Manual Order** checkbox in the Products panel.

If manual ordering is disabled, the items in the primary panel will be alphabetically sorted automatically. Note that the items in the secondary panel will always be sorted alphabetically.

When manual ordering is enabled, only database items in the primary panel can be manually reordered. The order of the items in the primary panel will represent the order that items will be displayed to the user during use of the ThermoCheck®. For example, if a database has Product first enabled, and manual ordering is enabled, the items in the product panel can be manually ordered. Alternatively, if a database has Process/Location first enabled, and manual ordering is enabled, the items in the Process/Location panel can be manually ordered.

Note that if **Manual Order** is checked, the ThermoCheck® will treat the database as manually ordered regardless of whether or not the items in the database are in alphabetical order or not. Please refer to Chapter 6, *Using the ThermoCheck®*, for more information on how Manual Order affects the operation of the ThermoCheck® unit.

When manual ordering is enabled, items in the primary panel can be ordered using the Move Up and Move Down buttons, the Move Up and Move Down commands on the Edit menu, or by dragging with the mouse.



To move a product up or down within the list of products:

Ensure that the products panel is currently displayed and the **Product first** button is down.

Ensure that manual order is enabled, by checking **Manual Order**.

Select the product you wish to move.

Move the product to the desired position by:

- clicking the **Move Up** or **Move Down** buttons,
- selecting **Move Up** or **Move Down** from the Edit menu,
- using keyboard shortcuts [Ctrl-Page Up] and [Ctrl-Page Down], or
- dragging the product to the desired position in the list.

To move a process/location up or down within a list of processes/locations under a product:

Ensure that the product panel is currently displayed and the **Product first** button is down.

Ensure that manual order is enabled, by checking **Manual Order**.

Select the process/location you wish to move.

Move the process/location to the desired position by:

- clicking the **Move Up** or **Move Down** buttons,
- selecting **Move Up** or **Move Down** from the Edit menu,
- using keyboard shortcuts [Ctrl-Page Up] and [Ctrl-Page Down], or
- dragging the process/location to the desired position.

To move a process/location up or down within the list of processes/locations:

Ensure that the Process/Location panel is currently displayed and the Process/Location first button is down.

Ensure that manual order is enabled, by checking **Manual Order**.

Select the process/location you wish to move.

Move the process/location to the desired position by:

- clicking the **Move Up** or **Move Down** buttons,
- selecting **Move Up** or **Move Down** from the Edit menu,
- using keyboard shortcuts [Ctrl-Page Up] and [Ctrl-Page Down], or
- dragging the process/location to the desired position in the list.

To move a product up or down within a list of products under a process/location:

Ensure that the process/location panel is currently displayed and the Process/Location first button is down.

Ensure that manual order is enabled, by checking **Manual Order**.

Select the product you wish to move.

Move the product to the desired position by:

- clicking the **Move Up** or **Move Down** buttons,
- selecting **Move Up** or **Move Down** from the Edit menu,
- using keyboard shortcuts [Ctrl-Page Up] and [Ctrl-Page Down], or
- dragging the product to the desired position.

Product Specifications, Alarms and Delays

You can enter specification limits for each of the products you have defined, at each critical process/location, in either the **Products** panel, or the **Processes/Locations** panel. An upper specification is the *maximum* allowable temperature for a product at a given process/location, and a lower specification is the *lowest* allowable temperature at the given process/location.

The software will indicate when and which readings have been recorded that are above or below these values when viewing the reading data. For information on viewing readings, and how the specification values affect the display of readings in the software, see Chapter 7, *Accessing Data Stored in the ThermoCheck®*.

Additionally, you can set alarms for a product at a process/location for the upper and/or lower specification values. When alarm condition has been violated (when a reading is above the upper specification value or below the lower specification value) the unit will beep and display an alarm symbol on the display.

You can set specification values to match your organisation's quality control specifications. Note that the specifications for a product may vary widely between processes/locations, for example:

- *mince pies*, in the *freezer*, might have an upper and lower specification of -20°C to -15°C respectively,
- but during *cooking*, the upper and lower specification may be 160°C to 180°C .

The unit also supports a probe reading storage delay at each process/location for a product. A reading storage delay is useful in situations where the temperature of the product may require time to stabilise to ensure a fair and accurate reading is recorded. Setting a reading storage delay value ensures that when a reading is taken, whoever the operator is, the sensor is given enough time to record an accurate reading. If a reading storage delay is configured for a product at a process/location, the display will flash WAIT, and the unit will sound a series of beeps, for the configured reading storage delay, before storing the reading.

To set up the specifications for a product, in the Products panel:

- Select the appropriate process/location, under the chosen product.
- Enter the upper and lower specification values in the **Upper** and **Lower** boxes, in the **Specifications** group, in the panel to the left of the tree view.
- If you require an alarm on the upper or lower specification, tick the appropriate checkbox(es) in the **Alarms** group.
- If the probe will need a reading storage delay, enter this in **Reading Storage Delay**. This delay is specified in seconds.

The process is the same for setting specifications in the **Processes/Locations** panel, except that the first step involves selecting the product under the chosen process/location (as opposed to the other way around).

Templates

When you have set up a database, you can also save it to a **Template** file, for future use. To do this, select **Save** or **Save As** from the **File** menu. Type in the name of the file you want to save the template database as, and click Save. Template files typically have a .tlf extension. You can open these files by selecting **Open** from the **File** menu. Once a file is opened, you can alter it to the present requirements. You can then upload a template into the ThermoCheck®, replacing its current database information, in the normal manner. Templates also include user information (see Chapter 4, *Setting Up a User List*, for information on users). You can use a template to set up more than one ThermoCheck® with the same database and user list.

Uploading a Database

When you have set up the database to your requirements, you can upload it to the ThermoCheck® by selecting **Set Database** from the ThermoCheck® menu. If the ThermoCheck® contains readings that have not yet been saved to a file, you will be prompted for a file name to save the reading information to. Note that uploading a blank database (with no products or processes/locations) will not remove any current product-process/location database in the ThermoCheck®. For information on using the reading data in the ThermoCheck®, refer to Chapter 7, *Accessing Data Stored in the* .

Command Summary

Below follows a summary of useful commands available for setting up and editing a product and process/location database. The keyboard shortcuts for menu items are included.

Products Panel

[Left-mouse click]	Selects a product or process/location.
[Ctrl-P], [Ctrl-N]	Adds a new product.
[Ctrl-L]	Adds a new process/location.
[Insert]	If there is no selection, or a product is selected, a new product will be added.
[Insert]	If a process/location is currently selected, a new process/location to the current product will be added.
[Delete]	If a product is currently selected, then this selected product will be deleted.
[Delete]	If a process/location is selected, then the selected process/location will be removed from the current product. Note that the process/location will remain in the Processes/Locations panel until it is deleted directly from the Process/Locations Panel.
[F2]	Allows the name of a selected product or process/location to be changed.
[+]	If a product is selected, and it has a list of process(es)/location(s), which is hidden, the list of processes/locations for the selected product will become visible.
[-]	If a processes/locations list is visible under the selected product, then this key will hide the list of processes/locations.
[*]	Expands all products to show all the processes/locations of all the products.
[/]	Hides any visible processes/locations lists visible under products, causing only the products to remain visible.
[Esc]	When editing a product or processes/locations name, restores the original name. If the item (product or process/location) has just been added, deletes the item.
[Ctrl-Page Up]	If a product is selected, moves the product up the tree.
[Ctrl-Page Up]	If a process/location is selected, moves the process/location up within the list of processes/locations under the parent product.
[Ctrl-Page Down]	If a product is selected, moves the product down the tree.
[Ctrl-Page Down]	If a process/location is selected, moves the process/location down within the list of processes/locations under its parent product.

Processes/Locations Panel

[Left-mouse click]	Selects a product or process/location.
[Ctrl-L], [Ctrl-N]	Adds a new process/location.
[Ctrl-P]	Adds a new product.
[Insert]	If there is no selection, or a process/location is selected, a new process/location will be added.
[Insert]	If a product is currently selected, a new product to the current process/location will be added.
[Delete]	If a process/location is currently selected, then this selected process/location will be deleted.
[Delete]	If a product is selected, then the selected product will be removed from the current process/location. Note that the product will not be removed from the Products panel until it is deleted directly from the Products Panel.
[F2]	Allows the name of a selected product or process/location to be changed.
[+]	If a process/location is selected, and it has a list of product(s), which is hidden, the list of products for the selected process/location will become visible.
[-]	If a product list is visible under the selected process/location, then this key will hide the list of products.
[*]	Expands all processes/locations to show all the products of all the processes/locations.
[/]	Hides any visible product lists visible under locations, causing only the locations to remain visible.
[Esc]	When editing a product or process/location name, restores the original name. If the item (product or process/location) has just been added, deletes the item.
[Ctrl-Page Up]	If a process/location is selected, moves the process/location up the tree.
[Ctrl-Page Up]	If a product is selected, moves the product up within the list of products under its parent process/location.
[Ctrl-Page Down]	If a process/location is selected, moves the process/location down the tree.
[Ctrl-Page Down]	If a product is selected, moves the product down within the list of products under the parent process/location.

4

Setting Up Corrective Actions

Introduction

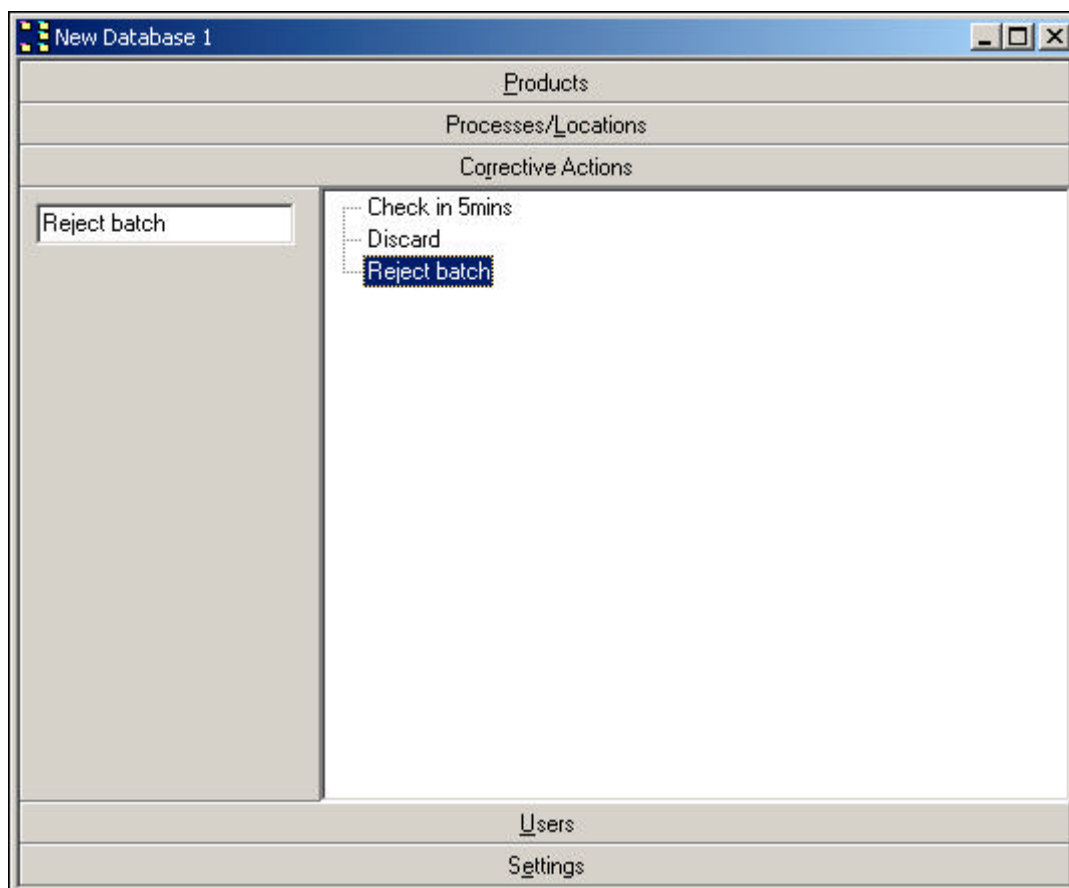
Corrective actions are used to prompt the user to perform certain actions when the readings to be stored are not within specification and records which action the user has selected to perform.

Creating Corrective Actions

To include corrective actions for various products, first add the corrective action meanings to the “Corrective Action” panel. You press the [Insert] key in the **Corrective Actions** panel, and then type the name (or other descriptive text) of the corrective action. You can also add a user by selecting **New** or **New Corrective Action** from the **Edit** menu. Corrective action names can not start or finish with spaces, so if a corrective action name is created with leading spaces, for example, then the software will remove all the leading spaces. Also each corrective action created must have a corrective action name and therefore blank (empty) corrective action names are not supported and the software will prevent these from being created.

You can delete corrective actions by selecting their name in the **Corrective Actions** panel and pressing the [Delete] key, or by selecting Delete from the Edit menu. If the **Confirm when Deleting Entries** option is enabled in the **Configuration Options** (see Chapter 2, Configuration Options, for further information) then you will need to confirm the deletion operation before the user is deleted.

In order for any changes you make to the Corrective Actions list to take effect in the ThermoCheck® you assign the corrective actions to the appropriate products and must upload the database with the **Set Database** command.

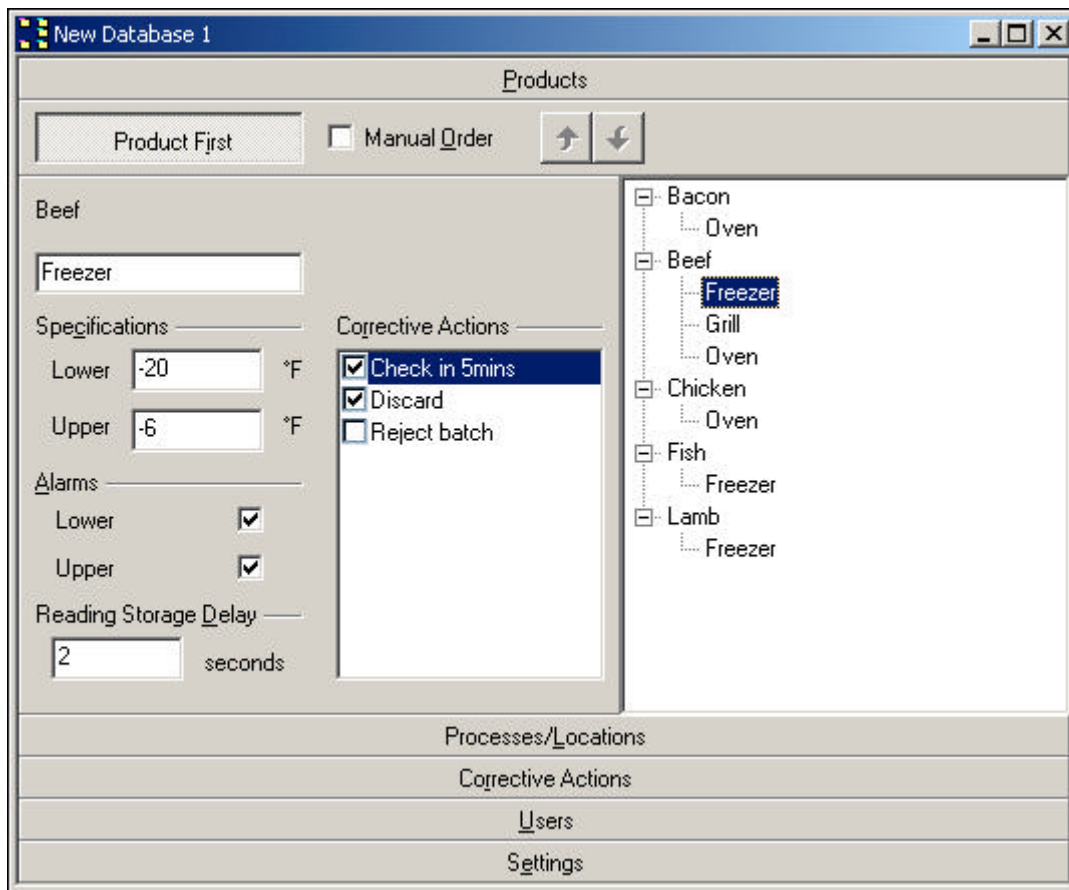


Corrective Actions Panel in the Database Window

Assigning Corrective Actions

Once you have created the corrective actions to be assigned to various products, select the Products panel or the Processes/Locations panel. Select the product and process/location that you want to assign one or more corrective actions to and you will notice that now the corrective actions are listed in the corrective actions list box for each item. Placing a tick for the appropriate corrective action(s) will assign the corrective action to the product for each process/location. Removing the tick for the appropriate corrective action(s) will disassociate the corrective action from the selected products.

Only corrective actions that are assigned to products and their process/location will be stored within the memory of the ThermoCheck® when the new/modified database is uploaded, through the **Set Database** command.



Assigning Corrective Actions to Database items

Command Summary

[Left-mouse click]	Selects a corrective action.
[Ctrl-R]	Adds a corrective action.
[Insert]	If there is no selection, or a corrective action is selected, a new corrective action will be added.
[Delete]	If a corrective action is currently selected, then this selected corrective action will be deleted.
[F2]	Allows the name of a selected corrective action to be changed.
[Esc]	When editing a corrective action name, restores the original name. If the corrective action has just been added, deletes the item.

5

Setting Up a User List

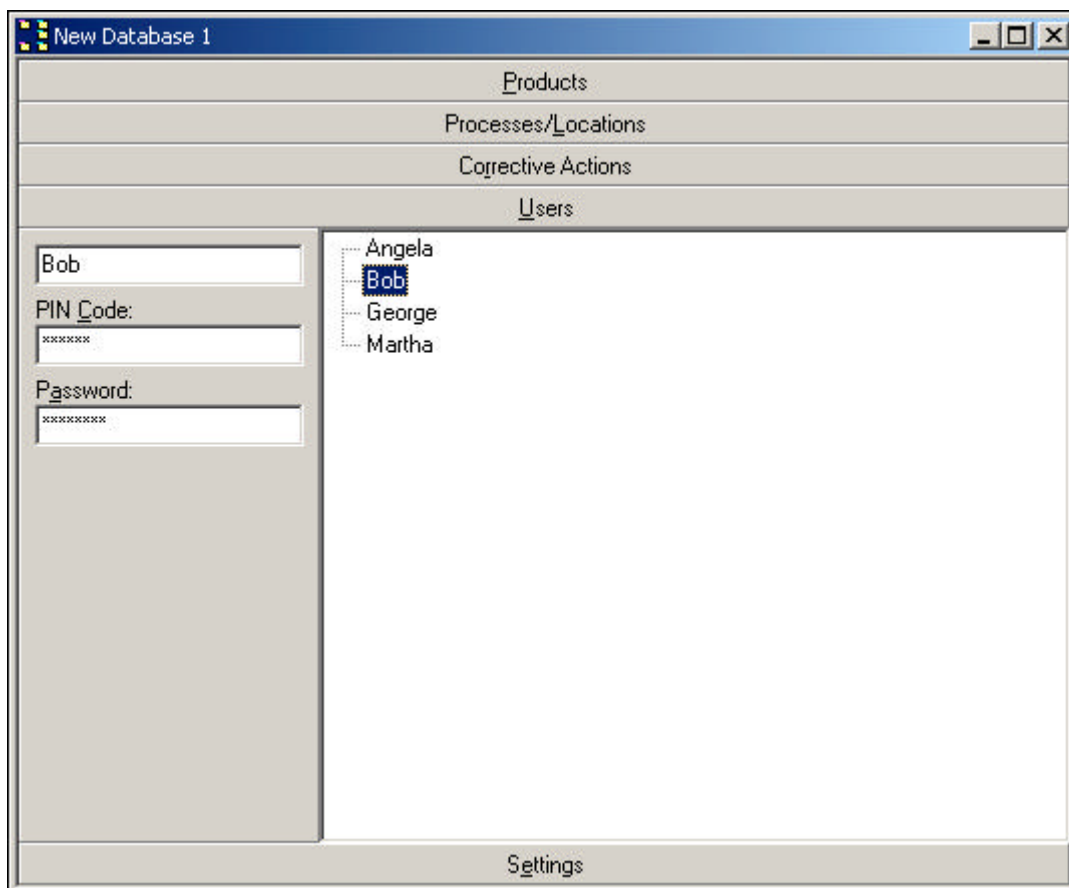
Setting the ThermoCheck® up to include user information is optional. The advantage of setting up a user list in the unit is that reading information stored in the ThermoCheck® will also include the name of the user who performed each reading. When a user list is defined in the unit, a user must be logged on before any readings can be taken. Only one user may be logged on at any one time.

Enabling a user list also allows you to protect the database from unauthorised tampering and also restrict viewing of the stored readings to those that can authenticate, with a password, that they are authorised to do so. Note that all users defined in the unit are authorised to take readings for all products defined in the unit.

For example, if your application is security-conscious, you may wish to set up a single user in the unit, so that only one person is able to configure and use the ThermoCheck®. Alternatively, you may want to set up multiple users. For example, you could set up a single operator to be responsible for taking readings for each product, and allow another person to be responsible for downloading the reading data and setting up the database.

You can add and remove users from the **Users** panel in a database window. You can view this panel by clicking the **Users** button in a database window.

The user list can be uploaded to the unit, along with the product/location database and configuration settings, via the Set Database command. See Uploading a Database in Chapter 3, Setting up a Database, for more information.



Users Panel in the Database Window

Adding and Removing Users

The method for adding users is much the same as that for adding products or processes/locations. You press the [Insert] key in the **Users** panel, and then type the name (or other descriptive text) of the user. You can also add a user by selecting **New** or **New User** from the **Edit** menu. User names can not start or finish with spaces, so if a user name is created with leading spaces, for example, then the software will remove all the leading spaces. Also each user created must have a user name and therefore blank (empty) user names are not supported and the software will prevent these from being created.

You can delete users by selecting their name in the **Users** panel and pressing the [Delete] key, or by selecting Delete from the Edit menu. If the **Confirm when Deleting Entries** option is enabled in the **Configuration Options** (see Chapter 2, Configuration Options, for further information) then you will need to confirm the deletion operation before the user is deleted.

In order for any changes you make to the user list to take effect in the ThermoCheck® you must upload the database with the **Set Database** command.

User Options

When a user is selected, their password and PIN code are shown in the panel next to the user list. For security and privacy reasons, PIN codes and passwords are displayed as a series of asterisks.

The **PIN code** identifies the user currently operating the ThermoCheck®. Therefore PIN codes must be unique to each user and no two users may have the same PIN code. A PIN code is made up of up to eight digits. Other characters, for example alphabetic characters, are not allowed to be any part of a PIN code, as the unit only allows for the entry of numbers through its keypad.

The software uses a user's **Password** to prevent unauthorized usage of the ThermoCheck®, including modification of the database and the retrieval and viewing of the stored readings. Passwords are optional and can consist of up to 16 characters, including both letters and numbers. In addition, the password is case-sensitive and therefore lowercase characters are identified as being different to upper case characters. Passwords can not start or finish with spaces, so if a password contains leading spaces, for example, then the software will remove all the leading spaces.

Command Summary

[Left-mouse click]	Selects a user.
[Ctrl-U]	Adds a new user.
[Insert]	If there is no selection, or a user is selected, a new user will be added.
[Delete]	If a user is currently selected, then this selected user will be deleted.
[F2]	Allows the name of a selected user to be changed.
[Esc]	When editing a user name, restores the original name. If the user has just been added, deletes the item.

6

Customizing the ThermoCheck®

Customizing With the Software

If you click the **Settings** button in the database window, the configuration settings panel will become visible. Any changes you make to these settings will not take effect until the database is uploaded to the ThermoCheck®.

New Database 1

Products

Processes/Locations

Corrective Actions

Users

Settings

General Information

Description

Display Controls

Contrast 225 (88%)

Back light 15 seconds

Auto off Disabled

Display Settings

Temperatures in Fahrenheit (°F)

Format of date DD/MM/YY

☐ 24 Hour time format

Today is: 16/03/04 12:31pm

Date and Time

☒ No change

☐ Match computer date and time

Power Settings

☐ Re-chargeable batteries installed

Settings Panel in the Database Window

General Information

This box displays general information about the ThermoCheck®, including the serial number, product code and battery status. Note that the serial number, product code and battery status will only be displayed if the database was downloaded from a ThermoCheck®. You can also type in a description here, which will be displayed at the top of the screen when the unit is powered up (once the database has been uploaded to the ThermoCheck®).

Display Settings

You can set up how you want the display to show dates and temperatures in the **Display Settings** box. Choose your preferred temperature units from the **Temperatures in** drop-down menu and your preferred date format from the **Format of date** drop-down menu. There are other options for the time format. The effect of changing any options in this box is shown at the bottom of the box, with an example of the computer's current date and time.

Display Controls

These slider controls in the **Display Controls** box allow you to set up the properties of the display. All of the settings in this box can also be set in the unit directly; see *Setup Screen* below.

You can choose an appropriate contrast setting by moving the **Contrast** slider. Increasing the Contrast setting will cause the characters on the display to darken. Please remember that changing the Contrast value will not have any affect on the display until the (new) settings are uploaded.

The number of seconds the LCD backlight will wait, when no keys are pressed, before turning off, can be set with the **Backlight** slider.

You can also set the auto power off delay with the **Auto off** slider. This value is the number of minutes that the unit will wait, when idle, before turning the power off itself. The Backlight and Auto Power Off features can be disabled by moving their sliders all the way to the left, to their lowest settings.

High values of the **Auto off** and/or **Backlight** controls will reduce the battery life of the unit.

Date and Time

You can adjust the internal time clock with the options in this box. If you click **Match computer date and time**, the unit's time clock will be set to match your PC's internal clock. Note that this will only occur if the settings are uploaded to the unit (with the **Set Database** command). Select the **No change** option if you do not want to have the clock updated.

Power Settings

- If the unit has rechargeable batteries installed, check the **Re-chargeable batteries installed** box to enable charging of the batteries.

This option must not be enabled if your ThermoCheck® has non-rechargeable batteries installed. Therefore, only enable this option if your ThermoCheck® has rechargeable batteries installed.

WARNING: If you enable this option, the ThermoCheck® will try to charge the batteries whenever it is externally powered. If the batteries installed in your unit are non-rechargeable they may explode or cause damage.

Customizing Without Using the Software

If you press the *SETUP* key when the unit is turned on, the current state of the configuration options will be shown on the display. This setup screen gives access to some of the options available in the **Configuration Settings** panel of the database window of the software.

The available configuration options are:

Contrast This is the same as the **Contrast** setting in the **Display Controls** box.

Light Backlight off time delay. This is the same as the **Backlight** setting in the **Display Controls** box.

Auto off Auto power off time delay. This is the same as the **Auto off** setting in the **Display Controls** box.

Recharge This is the same as **Re-chargeable batteries installed** in the **Power Settings** box.

You can change the values of these options by using the up and down arrow keys to select the option, and then pressing the *ENTER* key. The cursor will now point to the current value of the selected option. You can change the value with the left and right arrow keys.

When you are satisfied with a value, you can press the *ENTER* key to set the value, or you can press the *ESCAPE* key to cancel, to cause the value to revert back to its original setting. When the cursor points to one of the options, you can press the *ESCAPE* or *SETUP* key to exit the setup screen. The display will briefly show the power-up screen, including the firmware version and battery voltage, and then revert to displaying the unit's current date, time and temperature reading.

For example, to change the contrast setting:

Press the *SETUP* key. The display will show the setup screen.

The cursor is already pointing at the "Contrast" setting.

Press *ENTER* to move the cursor to the contrast value.

Use the left and/or right arrow keys to change the setting.

When you are satisfied with the setting, press *ENTER* again to set the value, or *ESCAPE* to cancel.

The cursor will move back to the left.

Press *ESCAPE* to exit the setup screen.

Using the ThermoCheck®

Using the ThermoCheck® for the First Time

If your ThermoCheck® is turned off, you can turn it on by pressing any key on the keypad, or by attaching external power, or by connecting a computer. When a ThermoCheck® is powered up, the battery voltage, along with the firmware version, will be shown on the display. This power-up screen is shown every time the unit is turned on, or the configuration settings are viewed or changed (see Customizing Without Using the Software, in Chapter 5, Customizing the , for information on updating the unit's settings).

"No database" is also displayed on the power-up screen if the unit does not have a database installed. If a database has been preloaded in the unit, the number of free readings will be displayed. In addition, there may be a description of the ThermoCheck® at the top of the screen. You can set or change this description in the software (see Customizing With the Software, in Chapter 5, Customizing the).

After two and a half seconds, the display will show the current date and time along with the current temperature, if the sensor probe is plugged in. If a user is logged on, this screen will also display the name (or description) of the user that is currently logged on.

When the unit's battery requires charging or replacement, an empty battery symbol will flash in the top right-hand corner of the display screen. If the batteries are rechargeable, you can charge them by connecting external power and by ensuring that the **Recharge** option is enabled (see Customizing Without Using the Software, in Chapter 5, Customizing the). While the battery is charging, the battery symbol in the top right of the display screen will repeatedly fill with black. When the battery has completely charged the symbol will disappear.

A ThermoCheck® requires a database before it is able to take any readings. Please refer to Chapter 3, Setting up a Database, for further information about creating and uploading databases to the ThermoCheck®.

Selecting a Product and Process/Location

Before taking a product's reading, you first need to install a database in the unit to store the different products and processes/locations. Processes/locations refer to the various stages in the production of a product at which you are interested in monitoring the product's temperature, to ensure (for example) that quality control guidelines are met.

For information on defining a product and process/location database, refer to Chapter 3, Setting up a Database. Once you have a database relating products and processes/locations stored in the unit, you can select products and processes/locations and then record temperature readings.

In addition, if you want to store an operator's name with a reading, you will need to install a user list in the unit. For information on user lists, refer to Chapter 4, Setting Up a User List. If a user list has

been installed in the unit, a user will need to log on before a reading can be recorded (see Logging On and Logging Off below).

The database orientation affects the process of selection of products and processes/locations for recording readings. If the database process/location oriented, a process/location (the *primary key*) is selected first and then a product under that process/location (the *secondary key*) is selected before a reading is taken. Alternatively, if the database is product oriented, a product (the *primary key*) is selected first and then a process/location (the *secondary key*) under that product is selected before a reading is taken.

If a database is not manually ordered, a letter of the alphabet is chosen before a list of primary key items is displayed, centred around items beginning with the chosen letter. For example, if the database is process/location oriented, a list of processes/locations will be displayed, centred around the letter previously chosen. Alternatively, if the database is product oriented, a list of products is displayed, centred around the letter previously chosen. If the database is not automatically sorted alphabetically, the primary items are presented in the order specified when the database was created.

To begin taking readings, first press the *PRODUCT* button. If there is a user list installed in the unit and no user is currently logged on, a user will have to log on, via the log-on screen, before continuing (see Logging On and Logging Off, later in this chapter, for more information). Then a primary item is selected (as above), and then a secondary item is selected, after which a reading can be taken.

The following examples illustrate the selection of a product and process/location in order to take a reading.

For example, if the database is product oriented, manual ordering is disabled, and there is no user list installed in the unit:

Press 

Select, using the arrow buttons, the letter of the alphabet corresponding to the initial of the product you wish to measure the temperature of, and press *ENTER*.

Select a product, using the up and down arrow buttons, and press *ENTER*.

Select a process/location, using the up and down arrow buttons, and press *ENTER*.

Alternatively, if the database is process/location oriented, manual ordering is enabled, and there is a user list installed:

Press 

Enter a valid user PIN code, using the digit keys, and press *ENTER* (see *Logging On and Logging Off*, later in this chapter, for more information).

Select a process/location, using the up and down arrow buttons, and press *ENTER*.

Select a product, using the up and down arrow buttons, and press *ENTER*.

Once you have made a selection of a product and a process/location, the screen will display:

- the currently selected product and process/location,
- the current date and time,
- the current reading of the temperature probe,
- and, if a user list is installed in the unit, the current user's name.

If at this stage you want to select a different secondary item, under the current primary item, you can do so with the left and right arrow keys. For example, if the database is process/location oriented, you can select a different product under the current process/location by using the arrow keys. Alternatively, if the database is product oriented, you will be able to select different processes/locations under the current product by using the arrow keys.

Taking and Storing a Temperature Reading

Once a product and process/location has been selected, the unit will display the current reading registered by the sensor probe.

- If the reading is above specification, HIGH will be displayed next to the reading.
- If the reading is below specification, LOW will be displayed next to the reading.
- In addition to the above, if the alarm has been enabled for the upper and/or lower specifications, an alarm symbol will be displayed next to the temperature reading, if the temperature reading violates the alarm conditions.
- If the reading is within specification, OK will be shown next to the value.

To store the reading, press the *STORE* button.


- If there is a reading storage delay specified for the currently selected product and process/location, WAIT will be displayed next to the reading, and beeps will sound from the ThermoCheck®, until the reading storage delay has passed. Note that it is advisable that the temperature probe sensor remains motionless during the reading storage delay to ensure accuracy of the stored reading.
- If alarms are enabled for upper and/or lower specifications, and the reading violates the alarm conditions, beeps will sound as the reading is stored.

For information on setting specification values, alarms and reading storage delays, refer to Chapter 3, Product Specifications, Alarms and Delays.

The reading is then stored, and the unit will briefly display the number of free readings available and then return to displaying the current reading. You can now:

- take another reading for the currently selected product and process/location
- select another process/location for the current product,
- or press right/left arrow, *LIST* or *ESCAPE* to select another product.


Logging On and Logging Off

If there is a user list installed in the unit, you will need to log on to identify yourself before a reading can be taken. If no users are currently logged on, you can do this by pressing the  key or the



key, which will bring up the log-on screen. Only one user may be logged onto a single ThermoCheck® at one time, therefore logging a new user on to a ThermoCheck® will log the previous user off. It is optional to install a user list to the ThermoCheck®.



You can log a user off by pressing the key and then pressing the  key. If no PIN code is entered, any user currently logged on is logged off.



The log-on screen prompts for a user PIN code by displaying “ENTER PIN:”. Type in valid user PIN




and press the key. If the PIN is recognised, the display will show the user’s name on the screen.




If you pressed the key, the product selection screen will be displayed and you can select a product and process/location as above. If you pressed the



key, you can now select a product and process/location in the normal way by pressing the  key. The process of taking readings is the same as when there is no user list installed in the unit, but the reading data stored will always include the name of the user who was logged onto the ThermoCheck® when the reading was recorded.

You can continue taking readings without having to log on for each new product. When you have



finished, remember that you can log off by pressing the key and then pressing the  key. For information regarding users, refer to Chapter 4, Setting Up a User List.



8

Accessing Data Stored in the ThermoCheck®

Downloading Readings

To download the reading information stored in the unit, select **Get Readings** from the ThermoCheck® menu. If users are defined in the unit, you will be prompted to enter a username and password. If the user name and the password are valid, the reading information will be downloaded from the ThermoCheck®. The retrieved data will be displayed and listed in a new window.

Viewing Listed Readings

The list window displays each reading as a row in a list. There is a column for each aspect of the reading, including:

- the date and time the reading was stored
- the product name and/or description
- the process/location of the product that the reading refers to
- the recorded temperature
- whether the reading of the product was above, below or within the specification range for the process/location
- the name of the user that was logged on and performed the reading, if a user list was defined in the unit at the time of the reading.

The list can be sorted by any of these categories by clicking on the column header. Clicking again on the header will reverse-sort the list with respect to that category.



At the top of the list window is a menu, which allows you to specify how data is grouped. There are five options:

View ungrouped	Select this option to view the values in a list, which can be sorted by any of the column headings.
Group by Product	Select this option to display a separate sub-list of readings for each product.
Group by Process/Location	Select this option to display a separate sub-list of readings for each process/location.
Group by User	Select this option to display a separate sub-list of readings performed by each user.
Group by Year: Month	Select this option to display a separate sub-list of readings for each month.

Graphing Readings

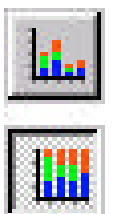
You can create a graph of the readings with the **Graph** button at the top of the list window (next to the grouping menu). First choose a grouping of the data with the grouping menu, and then click the **Graph** button. The graph is displayed in a new graph window. The grouping you choose affects the units of the x-axis. For example, if you graphed readings that were grouped by process/location, the x-axis would include all of the processes/locations in the graphed data.

You can graph a subset of the data by clicking and dragging the mouse over the data you want to graph, or clicking on individual rows, in the list window, before clicking **Graph**.

Viewing a Graph

When viewing a graph, you can zoom in on a certain part of the graph by clicking and dragging a rectangle. The area inside the rectangle you defined will enlarge to fill the window.

The Y-axis can display either numbers of readings, or alternatively, percentages. The button in the top left of the graph view determines whether the percentages or number of readings will be displayed on the (vertical) Y-axis. When this button is down percentages will be displayed; otherwise numbers of readings will be displayed.



At the top of the graph window there are three buttons, which allow you to control whether out of specification readings are shown on the graph:

- the button with the red arrow determines whether above-specification readings are included: if it is down, above-specification readings will be shown on the graph; if it is up, they will not be displayed.



- the button with the green arrow determines whether within-specification readings are included: if it is down, within-specification readings will be shown on the graph; if it is up, they will not be displayed.



- the button with the blue arrow determines whether below-specification readings are included: if it is down, below-specification readings will be shown on the graph; if it is up, they will not be displayed.



These buttons are only available when the Y-axis shows numbers of readings. If the graph shows percentages of total readings, all readings will be displayed.

Printing Readings

You can print readings by selecting the **Print** command from the **File** menu.

If the topmost window is a graph, the graph will be printed using patterns for filling of the bars. Patterns are used for printouts to support monochrome printers. The use of patterns also aids the readability of some forms of electronic transmission, for example facsimile transmission.



Print dialog

If the topmost data window is a list, the Print dialog will be launched, allowing you to specify exactly what data you want to print, and how to print it. The options available in the Print dialog box are:

- If there are multiple printers available on your PC, you can choose from available printers with the drop down **Printer** menu.
- You can specify a certain type of grouping of the readings on the printout, or choose to print the data ungrouped, with the drop-down **View to print** menu. The option you select will also affect the grouping of the data in the window.
- The orientation of the data on the page can be specified by selecting an option from the **Paper Orientation** box. Select **Landscape** for a page that is wider than it is tall, or select **Portrait** for a page that is taller than it is wide.
- If you have chosen to print the data grouped, you can specify whether to expand each group by selecting an option from the **Group control** box: you can expand all groups, collapse all groups, or use the current expansion as displayed in the list window on the screen.
- If a subset of the data is selected, you can enable the **Print only selected items** option to print only these readings.

Saving Readings to a File

You can save readings to a file by selecting **Save** or **Save As** from the **File** menu. If the data has not been saved already, or you selected **Save As**, you will be prompted for a filename to save the readings to. All of the data will be saved, irrespective of the grouping settings or the current selection. ThermoCheck® data files typically have a .tcf extension.

You can view data files at a later date by selecting **Open** from the **File** menu. This will launch the Open dialog box, which will allow you to specify a filename, or locate a file on your computer's hard disk or a network. The software will only open files of the ThermoCheck® data format (usually with a .tcf extension). You can view and print data that has been saved to a file in the same ways as data downloaded from the ThermoCheck® directly, in graph or list format.

One Year Limited Warranty

Taylor® warrants this product to be free from defects in material or workmanship for one (1) year from date of original purchase. It does not cover damages or wear resulting from accident, misuse, abuse, commercial use, or unauthorized adjustment and/or repair.

If service is required, do not return to distributor. For service, call between 7:30 and 4:30 PM, Mountain Standard Time, Monday through Friday. To assist us in serving you, please have the model number and date of purchase available. Should this item require service (or replacement at our option) while under warranty, please pack the item carefully and return it prepaid, along with receipt showing date of purchase and a note explaining reason for return to:

Taylor Precision Products
2220 Entrada Del Sol
Las Cruces, New Mexico 88001
Customer Service Phone: 1-800-225-4834
Customer Service Fax: 1-505-526-4347
www.taylorusa.com

There are no express warranties except as listed above. This warranty gives you specific legal rights, and you may have other rights which vary from state to state.

©2006 Taylor Precision Products and its affiliated companies, all rights reserved. Taylor® and Leading the Way in Accuracy® are registered trademarks of Taylor Precision Products and its affiliated companies. All rights reserved.

Made to our exact specifications in China.

Quality Certification – ThermoCheck



Serial Number	
Checked By	
Date	

Authorised Master Manual for ESCORT Data Logging Systems Limited, Reference: ISO 9001:2000
Section G.8.20.3 Revision 2 page 1/1

Recycling of electronic devices

Some parts in products from Taylor Precision Products consist of recyclable materials, but others should not be disposed of in household waste. To avoid pollution, we kindly ask you to adhere to national policies and regulations concerning waste disposal and recycling. Wireless Mini loggers and REDi devices must not be placed in your household garbage.



For Technical Information please contact:

Escort Data Loggers LLC
14940-A NE 95th Street
Redmond, WA 98052
877-999-3357
www.escortdataloggersus.com

For Customer Service Information please contact:

Taylor Precision Products
2220 Entrada del Sol
Las Cruces, NM 88001
800-225-4834
www.taylorusa.com

Your Notes :

Your Notes :

Your Notes :